

# ISLAND Clippings

Connecting our Community

Visit us online at [www.islandclippings.com](http://www.islandclippings.com)  
email: [islandclippings@gmail.com](mailto:islandclippings@gmail.com)

Tel: 705 246-1635  
Fax: 705 246-7060

## Help From Across the Border

TWO WEEKS AGO, ISLAND RESIDENT Carmen Nelson shared the touching story of Hsar, a young man who, through hard work and a lot of luck, managed to escape the poverty, hopelessness and racial hatred he suffered while growing up in a refugee camp in Thailand.

Although Hsar is working hard and flourishing in his new life in Canada, he had paid a terrible price for his new life. In accepting a life-changing offer from World University Services Canada to come and gain a post-secondary education here, he was forced to leave his young family behind, possibly to never see them again.

His wife and two-year-old daughter, who was born after he left, are still stuck in the miserable conditions of the Mae La refugee camp. In some ways, it's actually more like a prison. There's no work, few educational opportunities, little in the way of medical care but there are chances in abundance for disease and death from land mines and a hostile military that awaits them outside the camp fences. Although Hsar sends every available cent he can earn to support his family, it's a difficult challenge for everyone. The family dreams of the day that they might be reunited for a new life, here in Canada.

Carmen and her 'Group of Five' share that hope and are working to help make that happen, by sponsoring them as refugee candidates for emigration to Canada where they can join their husband and father. If they're successful, the 'Group of Five' would be responsible for ensuring that the newcomers would learn English, become employed and learn about Canadian culture. They would also be responsible for financially supporting the family for one year, which means that the 'Group of Five' will be reaching out to the community for help.

So far, the community is taking Hsar's family into its collective heart and we're sure that the Group's fundraising efforts



Seth Bernard



May Erlewine

*Continued on next page*



**Northern Advantage**  
Office: 705-942-6000

**A PART OF YOUR  
COMMUNITY**



*Hsar's wife and daughter*


will be successful. And now, to kick things off in style, there's also help coming from across the border! Two of America's top up-and-coming musical talents have learned of the family's situation and they're coming to help, by putting on a benefit concert right here on the Island, to help raise the funds to make the dream come true.

We're pretty sure that many Island music fans will be delighted to learn that Seth Bernard, an Island favourite, will be teaming up with a fellow rising star, singer/songwriter May Erlewine, to put on a benefit concert on Friday, April 22nd at the Legion Hall.

Seth and May, both well-known to audiences as single acts, have been performing and recording together for almost 10 years. Before they teamed up, they each paid their dues traveling across the land playing their music and sharing stories with everyone they met. Now, they are in constant demand, playing festivals all over the country and at venerable folk institutions such as the Ark in Ann Arbor and Garrison Keillor's "A Prairie Home Companion."

The two singer/songwriters have also headlined almost every major festival in Michigan and Seth's album, "Reconciliation & the Mystical Beyonda," won top honors at the Michigan Jammies in 2015.

Joshua Davis, another Island favourite, is a good friend and collaborator of Seth and May. Last spring, he made it to the finals of NBC's 'The Voice' and during that same season, Sawyer Fredericks from upstate New York and the eventual winner of 'The Voice', performed May's original song "Shine On" on the show.



**If you have not yet registered your children for baseball and soccer for the season, it's not too late!**

Registrations are still being accepted for this year's season.

Baseball is open to children aged 5-18 and for soccer children aged 3-18.

Coaches, Assistant Coaches, Referees, and Umpires are also needed!

If you are interested in helping out, please let us know  
**705-246-2625 Ext. 201.**

[www.stjosephtownship.com](http://www.stjosephtownship.com)



Registration forms are available at the Township of St. Joseph Municipal Office or online at [www.stjosephtownship.com](http://www.stjosephtownship.com)



**THE PANCAKE HOUSE**  
RESTAURANT AND GIFT SHOP

Opening Monday March 7th

**GILBERTSON'S**  
MAPLE PRODUCTS  
SINCE 1931  
OPEN MON. - SAT.

*We Invite you to Experience*  
the rustic charm & authentic family welcome while dining in our 100 seat restaurant.  
Come Share it with Family & Friends! *It's truly A Canadian Tradition!*

**SPRING 2016 SEASON** Monday March 7th - Saturday April 23rd  
Hours • Monday-Saturday 8 am - 8pm • Closed Sundays

**OUR TRADITIONAL SPRING MENU**  
• Pancakes •  
• French Toast •  
• Maple Pork Sausages •  
• Baked Beans • Fresh baked items •

AVAILABLE IN THE GIFT SHOP  
Pure Maple Syrup & Our Very Own Maple Signature Gourmet Products

**SATURDAYS**  
FREE TOURS and Sugar Bush Tractor Rides

[www.gilbertsonsmple.com](http://www.gilbertsonsmple.com)  
3090 HURON LINE • ST. JOSEPH ISLAND 705-246-2066

Sawyer said he had a few of May's songs on his song list every week while he was on the show. He never thought the producers would let him sing a song that wasn't on the top of the hit list, but Sawyer fought hard to sing "Shine On" because it meant something to him and his family. After eight seasons of the hit show, it was the first time that an independent musician's song had been performed on the show... and the song soared to #1 on the iTunes Rock chart (#4 overall) the day after his performance. This will be one of the featured songs at the concert on April 22 at the Legion.

Good cause or not, this concert is sure to be one of the top musical events we'll see this year. The doors will open and cocktails will be served at 7 pm, with the concert starting at 8 pm. Tickets are \$20 in advance (\$25 at the door), available at Kent's Corner and Ambeault's Confectionery in Richards Landing. All net proceeds will go to help reunite Hsar with his family. The great music will be a bonus!

RESIDENTIAL - COMMERCIAL - AUTOMOTIVE - HEAVY EQUIPMENT  
FULLY LICENCED / INSURED • OVER 25 YEARS EXPERIENCE

Windows / Doors / Siding / Decks / Roofing / Glass Repairs & Thermal Units  
Additions / Bath & Kitchen Renovations

**ISLAND GLASS AND RENOVATIONS**  
est. 1986

"Complete Glass and Renovation Specialists"

1611 P-Line Rd. • St. Joseph Island Prof Duran 705-246-1999

**Rod Wessell and Son**

- Septics • Road Building
- Lot Clearing

Open Storage Available

**Call 246-2811 Days or evenings and weekends**

**Desbarats Country Produce**  
Now open Saturdays from 10 am to 4 pm.

Local greenhouse-grown products available also some Southern Ontario produce **PLUS** lots of storage crops, honey, canned goods and fresh bread.  
**Whitefish in now, every week.**

**4378 Government Road**  
Just outside Desbarats. Follow the blue market signs

**HUNTER HOME SOLUTIONS**  
THE SAULT'S WATERPROOFING & RESTORATION SPECIALISTS

**BASEMENT WATERPROOFING**  
RESTORATION • HOME RENOVATIONS • PROPERTY MAINTENANCE

**705.206.6426**  
FREE ESTIMATES INFO@HUNTERHOMESOLUTIONS.COM

**Your Island TUPPERWARE**

Catalogues, products and service

Available at **Kent's Corner**

Susan Strader, Consultant  
islandtupperware@hotmail.com 705 246-7029

**Over The Edge ROOFING**

"WE WILL BE HERE TOMORROW, TO STAND BEHIND WHAT WE DO TODAY."

**FREE ESTIMATES • 705-971-7655**

**ISLAND Clippings**

Published weekly by **Heather & Brian Fox**

HOW TO REACH US:

By email: islandclippings@gmail.com  
By phone: 705 246-1635 • By fax: 705 246-7060  
By mail: The Island Clippings, 5285 5th Side Road, R. R. 1, Hilton Beach, Ontario P0R 1G0.  
Or simply use one of the Island Clippings boxes conveniently located at Ambeault's.

Kent's Corner and the Hilton Beach Waterfront Centre  
Off-Island Subscription Rates: \$65. per year plus tax.

The advertiser agrees that the publisher shall not be liable for damage arising from errors in advertisements beyond the amount paid for the space actually occupied by that portion of the ad in which the error occurred. There shall be no liability for non-insertion of any ad. Cost for ads may be adjusted from time to time due to price increases of postage, paper and ink. Ads cannot be copied. The editor reserves the right to edit, revise, classify or reject an ad. Articles submitted do not necessarily reflect the opinions of the editor.

**ISLAND HOME IMPROVEMENT**

Remodeling • Renovation • Maintenance  
GENERAL HANDYMAN SERVICES  
Call GREG 989 • 7794 IHI@live.ca

**COMPUTER PROBLEMS?**

- virus / malware removal
- slow PC clean up services
- email setup / configuration
- advice / support & tutoring

Call David Chuipka  
705-246-0711 • Cell 705 255-0007  
Email: dlcnetworks@gmail.com

**FIREWOOD FOR SALE**

Call **705 257-7006**

**KENTVALE Home hardware**

Sales & Service  
712 K Line Road  
You must see this 127 year old General Store

246-2002 www.kentvale.com

**HAZARD TREE REMOVAL**

- Professional
- Certified
- Trained
- Experienced
- Local

Call Matt at (705) 542-9951

**DON'S GARAGE**

RR#1  
RICHARDS LANDING ON  
**Tel: 705 246-2545**  
Fax: 705 246-1289

# North East LHIN Establishes New Expert Housing Panel

A NEW EXPERT HOUSING PANEL brought together by the North East Local Health Integration Network (LHIN) will focus on the housing and support needs of the frail elderly, homeless and at-risk populations, as well as our region's vulnerable population groups, including people with mental illness and addiction issues.

Feedback received from participants at the North East LHIN's Housing Forum - Building for the Future held last fall, indicated the need for a regional approach to housing and a panel. At its March 30th meeting, the LHIN Board learned that the call for panel members resulted in 49 people applying to sit on the 23 member panel.

"With so many strong and outstanding applicants, it was difficult to whittle down the number," said LHIN Senior Director Catherine Matheson. "We wanted the panel to respect our

region's rich diversity, including urban and rural geography, First Nation and Francophone representation. In addition, it was important for the panel to have senior leaders from a variety of sectors including housing, health, private, public, and economic development."



## LOTUS WIGHT'S

### ODE TO THE BANJO

(Lotus Wight of  
Sheesham & Lotus)

"a magnificent  
slice of 5-string  
heaven."

Steve Hunt  
fRoots Magazine

"a virtuoso album"  
Dai Jeffries,  
folking.com

At the O'Schrave Farm  
Wednesday, April 20  
7:30 pm  
\$20. by reservation  
705 782 4311  
or [music@algomatrad.ca](mailto:music@algomatrad.ca)  
[WWW.LOTUSWIGHT.COM](http://WWW.LOTUSWIGHT.COM)



Get to that  
special place.

Insurance { Personal Commercial } Financial

 **ALGOMA  
FINANCIAL  
GROUP**

Call us at (705) 949-6555!  
[www.algomafinancialgroup.com](http://www.algomafinancialgroup.com)

This new panel of experts will assist the North East LHIN in developing an *Innovative Housing and Health Strategy*.

The panel will meet monthly and take into consideration the LHIN's Integrated Health Service Plan (2016-2019) which identifies housing as a key enabler to health care transformation. The panel will also consider the latest announcement on March 14th by the Ministry of Municipal Affairs and Housing for a Supportive Housing Policy Framework to improve client outcomes.

The March 14th announcement further identified more than \$100 million in funding over the next three years for new supportive housing units to improve access for up to 4,000 families and individuals to services like counselling, dispensing medication, and life skills. It also identified support for the construction of up to 1,500 new supportive housing units across Ontario over the long term.

### The North East LHIN Expert Housing Panel includes:

- Andrea Lee, Director of Rehabilitation and Community Care Program, Health Sciences North (Sudbury)
- Angele Desormeau, Executive Director, South Cochrane Addictions Services (Timmins)
- Brian Marks, Director Housing Services, Cochrane DSSAB (Timmins)
- Dan O'Mara, Retired CEO of the MICs Hospital Group (Temagami)
- Don McBain, Executive Director, Ontario Aboriginal Housing (Sault Ste. Marie)
- Gail Spencer, Homelessness Coordinator, City of Greater Sudbury
- Gary Scripnik, NE LHIN Board of Directors.
- Janice Bray, Manager of Housing Services, District of Parry Sound Social Services Administration Board (Parry Sound)
- Janice Newsome, Director of Planning, Town of Hearst (Hearst)
- Jeff Barban, Sault Ste. Marie Social Services Board (SSM)
- Jeff Perry, President, Perry+Perry Architects (Sudbury)
- Joe Bradbury, CAO, District of Nipissing Social Services Administration Board (North Bay)
- Joe Dipietro, President, Autumnwood Mature Lifestyle Communities (Sudbury)
- John Wilson, Strategy and Advocacy, The Ontario Non-Profit Housing Association (Toronto)

*Continued on page 7*

# SETH BERNARD MAY ERLEWINE



## APRIL 22 @ 8PM

ROYAL CANADIAN LEGION  
RICHARDS LANDING, ST. JOSEPH ISLAND  
7PM - COCKTAILS & DOORS OPEN

TICKETS \$20 ADV / \$25 DOOR  
AT KENTS CORNERS & AMBEAULTS

BENEFIT CONCERT TO HELP  
BRING HSAR'S FAMILY TO CANADA

FOR MORE INFORMATION  
PLEASE CALL 705-246-2757

“JUST THE RIGHT BLEND  
OF FOLK, BLUES, ROOTS  
AND COUNTRY MUSIC.”

MAY'S "SHINE ON"  
FEATURED ON  
NBC'S THE VOICE



# Island Market

fresh local grocery

Call: 705.246.2500 [fb.me/stjoeislandmarket](https://fb.me/stjoeislandmarket)

Spring Hours:  
Mon-Sat 9-6,  
Sundays Closed

## HOT APRIL DEALS!



Reg. Price \$3.99 lb.

**2<sup>99</sup>**  
PER LB.

**Chicken Breast  
Bone In**



Reg. Price \$3.99 lb.

**2<sup>49</sup>**  
PER LB.

**Frozen Ground  
Pork**



Reg. Price \$3.49

**1<sup>99</sup>**

**Kraft BBQ Sauce  
Chicken & Rib/Regular  
455ml**



Reg. Price \$4.79

**3<sup>49</sup>**

**Renée's Caesar  
Salad Dressing  
355ml**



Reg. Price \$3.19

**1<sup>99</sup>**

**White Potatoes  
10 lb**

Offers valid starting Friday, April 15 to Saturday, April 16  
While quantities last.

**HOUSING PANEL . . .** *continued from page 5*

- Kris Longston, Acting Manager, Community and Strategic Planning, Greater Sudbury
- Lisa H. Meawasige - Mental Health & Addictions Manager - Maamwesying North Shore Community Health Services
- Lyle Hall, Mayor, Village of Sundridge
- Marion Quigley, CEO, CMHA Sudbury-Manitoulin (Sudbury)
- Marliese Gause, CEO, The Friends (Parry Sound)
- Maurey O'Neil, CEO, Economic Development Corporation of Wawa
- Michael Cullen, ED, United Way Sudbury & Nipissing Districts
- Michel Mayer, ED, Centre de santé communautaire de Sudbury Est, (Noëlville)
- Tanya Nixon, Vice-President of Mental Health, North Bay Regional Health Centre

The NE LHIN Innovative Housing and Health Expert Panel will recommend the strategy to the NE LHIN Board in the fall of 2016. They will be supported in their efforts by the Northern Ontario Service Delivery Association (NOSDA).

Across Northeastern Ontario:

- 1 in 5 Northerners are 65 or older — climbing to 1 in 4 by 2025 - a 5% increase.
- Assisted living for seniors has grown from 530 units (2008) to 1,700+ (2015).
- Long-term care has increased by 280 beds since 2008 to 5,048 (Spring 2015).
- Convalescent care has grown from 30 (2008) to 44 beds (2015) with a goal of 96 beds by 2031.

On average, it cost \$486 a day to keep a person in hospital, compared to \$72 per day to care for a person in the community with support.



**Kari Gamble, RMT** *Offering in home service only*  
Registered Massage Therapy  
Serving Echo Bay to Thessalon

**Call and book an appointment today!**

**My Services include:**  
30 minutes.....\$50.00    60 minutes.....\$80.00  
90 minutes.....\$120.00

\* Extra \$10 charge for Echo Bay, Bruce Mines and Thessalon or if required by distance to be travelled.

I accept cash, credit, cheque as well as email money transfer.  
**Call 705-971-2249**  
Email: karilynngamble@hotmail.com  
*Gift Certificates also available*



# Day & Night

## MOVING SERVICES PLUS!

**OPEN LATE & WEEKENDS. CALL ANYTIME!**

Local and long distance moving to any place in Canada.  
Save money, Do it yourself, you load and unload 20 foot cube trailer

- Free, no obligation estimates • “Last Minute” Moving
- Packing and Unpacking Services
- We move big screen tvs, upright pianos, woodstoves and safes

**RESIDENTIAL AND COMMERCIAL**  
**Call the Insured Professionals at 705 254-9150**

## ADVANCED URBAN FORESTRY

**PROFESSIONAL ARBORIST** *Fully Insured*

- Tree Removal
- Tree & Hedge Pruning
- Lot Clearing
- Forestry and Landscape
- Design & Improvements
- Spring Clean-up

**24 Hour Emergency Services**  
**Free Estimates**

Email: allenalexander@outlook.com

**Phone: 705 257-8360**



## BEAT THE MAY RUSH!

### Spring Tuneup Specials

Bring in your small engine powered equipment for a tuneup and receive the following bonus!

*Chain Saw .....Free Chain Sharpen*  
*Lawn Mower.....Free Blade Sharpen*  
*Riding Mower.....Free Blade Sharpen*  
*Roto Tiller.....Free Oil Change*  
*String Trimmer .....Free String Refill*  
*Brush Saw.....Free Blade Sharpen*  
*Generator .....Free Oil Change*

*Offer ends April 30, 2016*



**KENTVALE**  **Home hardware**

**Sales & Service**  
**712 K Line Road**  
**Richards Landing**

(705) 246-2002 www.kentvale.com



**Carl Thomas**  
Broker/Owner  
**705-246-8585**  
carlthomas@royallepage.ca  
www.carlthomas.ca

**ROYAL LEPAGE**  
**Northern Advantage**  
Office: 705-942-6000



**Caroline Miller**  
Salesperson  
416 931-1449 cell  
705 542-9967 cell  
705 942-6000 office  
Carolinemiller@royallepage.ca

**View More Pictures on line at [www.carlthomas.ca](http://www.carlthomas.ca).**



**A RUSTIC LANE**

Private location for this newer ranch style home set in a 100 acre maple bush. This stunning open concept features 2.5baths, hardwood floors, full basement, huge garage and separate 28 x 36 Shop. a "MUST SEE" at **\$499,000.**



**TURN KEY**

Bright and cheery 4 season cottage with spectacular views of the channel from the front porch. Immaculately restored with Napoleon propane FP, new flooring, insulation, shingles, windows. Garage and extra lot included. **\$189,000.**



**AFFORDABLE**

Two plus bedroom brick house nestled in the heart of the village. Mature lot with maple and lilac trees. Walk to the marina, boardwalk and all amenities. Updates include shingles 2015, windows, furnace, insulation, chimney liner 2008. Enjoy life in the village for **\$109,900.**



**SWIMMING, FISHING & BOATING**

Bright 4 BR cottage features pine and cedar interior with skylights. Sliding doors to wraparound deck and beautiful yard with spectacular views. Wood burning cedar sauna with shower and change room. Dock and deck. Workshop with loft. **\$229,000.**



**BEAUTIFUL WATERFRONT, CANOE POINT**

Private location. Upstairs has 2BR, 11/2 Baths and living area. Master BR has deck to enjoy the morning sunrise. Main level features open concept LR/DR/KIT, hot tub and laundry. New windows. 24 x 32 garage is handyman's dream. Gorgeous view of the lake **\$369,000.** Call Murry Pritchard Salesperson 705-849-0976



**IDEAL COUNTRY**

Neat and cozy 2BR with custom field stone FP sitting on 11A. Huge rear deck with view of lake Huron. Perfect retirement home minutes from Desbarats and marina. **\$159,000.**



**HILTON BEACH LOTS**

Large rectangular residential building lot with town water and good garden soil. Quiet location **\$39,500.**

Commercial building lot in the down town core with town services and frontage on Mark St. and Hwy 548. **\$129,000.**

Commercially zoned building lot on Hwy 548 near the downtown with access to town services. **\$119,000.**



**CHARMING & COZY COTTAGE!**

Nestled among the pines and cedars this private 1.5 storey season cottage features a unique blend of new and reclaimed wood and may one of a kind hand crafted wood details. Fabulous view from the 2 tier deck and loft of the lake. Lighthouse and sailboats. Clean sandy beach for swimming and bonfires. **\$249,900.**



**ISLAND RETREAT!**

Beautiful lakefront home with kids approved sandy beach. recent renovations include new bath, flooring, shingles, doors windows and insulation. Garage, appliances and some furnishings add to the value of this great year round island home. **\$189,000.**

**BUILD YOUR DREAM HOME!**  
Large level waterfront building lot on paved road. Culvert, hydro pole and driveway are in and cleared at the water. Good waterfront and fantastic views. **\$69,900.**

**A GREAT LOCATION!**  
Located on Richards St just south of the Town of Richards Landing, this 15A building site is ideal for an executive home, hobby farm or other possibilities. Call Carl for more details. **\$119,000.**



**DIAMOND IN THE ROUGH!**

4BR 2Bath bungalow needs some tender loving care, some paint and flooring. Built right on the rock on a large lot in Bruce Mines on nice street across the street from the water and on town services. New heating system just installed. Needs a little work but great price at **\$82,000.**



**COUNTRY CHARMER!**

Very well kept 1+1 bedroom home on 4.5A lot. 30 minutes to Sault Ste. Marie. Open concept living room, dining and kitchen area, deck and nicely landscaped yard. 2 large garages, excellent for the handyman. A Must See! **\$179,000. Call Murray Pritchard 705-849-0976.**



**WORLD CLASS SUNSETS!**

Enjoy panoramic views of the water and the passing ships from the huge wrap around deck. Great family cottage with 4 BR, open concept kitchen/LR/DR and front sun room with fold out couch for extra sleepers. Nice level lot with great sand beach at Sunset Point. New WETT certified wood stove. **\$209,000.**



**STUNNING VISTAS**

Striking off grid Viceroy Home with great views over Desbarats Lake. Floor to ceiling windows flood 3 levels with natural light. Fully furnished including stainless steel appliances, hickory cabinets, woodstove and 700 sq ft decking. Full basement and located on 6 acres **\$479,000.**



**PINE CONE COTTAGE**

Professionally designed and built in 2002 capturing the spirit and romance of a vintage camp. Careful attention to detail and craftsmanship is evident in the local stone fireplace, custom oak flooring, woodwork, railings, cabinetry, vaulted ceilings and cedar siding. Open concept design leads through Andersen french doors to huge screened porch. Beautiful views of the North Channel from this mature treed waterfront lot. **\$339,000.**

**COMMERCIAL**



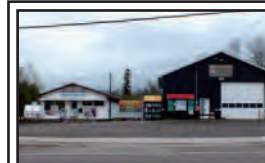
**BE YOUR OWN BOSS!**

Commercial building in downtown Hilton Beach close to the marina. Presently operated as a restaurant which can be continued or converted to other uses. Turn your business idea into a reality. Great opportunity for year round or seasonal business. Call for more info **\$110,000.**



**VARIETY STORE PLUS!**

A unique opportunity to operate a well established store in Hilton Beach. Convenience store, Lotto, LCBO outlet. High traffic location and near the waterfront and busy marina.



**LIVE, WORK, PLAY!**

Long established family business on in town acre lot. Variety and gift store with Lotto. 40 x 60 steel building for additional business uses. Extra lot for additional expansion. Charming 3BR home with full basement for owner or additional rental income. Great family opportunity.



**ISLAND COMMERCIAL**

Create your own employment on Beautiful St. Joseph Island at this established bakery and cafe. Price includes land, building and equipment. Great visibility and high traffic area as you enter the island. Continue the exiting business model or initiate your own ideas. Great business opportunity.



**HOUSE AND SHOP!**

5A country property with charming 3BR house, double garage and 2000sq ft Steel shop with 3 overhead doors, cement floor, insulated and heated and presently operating as auto repair garage which equipment can be purchased separately. Ideal for a tradesman or hobby garage. Call for more info. **\$279,000.**



## Island Insight

Letters to the Editor printed in the Island Insight Column reflect the views of the writer and not necessarily those of the Island Clippings.

### Facts, Figures and Fairness

This is a short, unemotional presentation of the facts and figures surrounding the possibility of cost-saving health care cuts in our community. Recent reports in local media speak of a possible reduction in MMH's emergency room services from 24 hours a day to 12 hours a day. This was one of the proposals submitted to the NE LHIN by the CEO of the Blind River District Health Centre (BRDHC) in an effort to address their deficit. We fall under the administration of the BRDHC in a so called "rural partnership". On March 10th, I sent out a rather scathing, outspoken and unapologetic email on this issue to my contact list under the heading "Blind River Blindside". It appears that this email has since enjoyed a wider distribution based on replies I have had from strangers. Here is a sober follow-up based entirely on facts and figures which speak to fairness.

The seven Townships and Village of Hilton Beach in the MMH catchment area extend from Echo Bay in the west to Bruce Mines but not including Bruce Mines in the east. According to the latest 2011 census the population in this area was 5,511.

According to Blind River, their catchment area includes up to and including the village of Sowerby in the west and up to and including the town of Spanish in the east. The 2011 census reported 5,386 residents in that area.

Though population figures have probably changed since then, I have no reason to believe that the relative numbers have changed. Specifically we in the MMH catchment area have a greater population than the BRDHC has in theirs.

In fiscal year 2015/16 (ending 31 March 16) the BRDHC received \$9,388,664 in funding from the NE LHIN. This is just their site. In addition, the LHIN base allocation for the MMH was \$1,025,600. For the Thessalon Hospital, just as a matter of interest, the allocation was \$1,575,000.

Blind River received so much more because they are a true 20 bed hospital staffed full time with doctors, nurses and technicians. The Matthews Memorial Hospital is a hospital in name only; in fact currently it is a 24 hour walk-in emergency centre with doctors on call outside of regular office hours.

In the interests of fairness, every citizen of Ontario should receive the same level of health care regardless of where they live. You would think per capita health care spending would be approximately equal throughout the Province among similar geographical locations. Urban areas with large popula-

**La Terrazza Franzisi** is coming back to Richards Landing Marina for the 2nd year.

Needing Cooks, Kitchen Prep, Dishwashers and Servers.

Great Summer Job at a Great Summer Resort Location.

Seasonal Term starting May 15 -October 15

Contact by email [franzisitakeaway@shaw.ca](mailto:franzisitakeaway@shaw.ca) or Maria Moro-Franzisi 705 759-5778.

### BARLOW CHIMNEY SWEEPS

**FOR ALL YOUR WOOD BURNING NEEDS**



- SALES AND SERVICE OF PELLET AND WOOD BURNING UNITS
- CHIMNEY SALES
- SYSTEM INSTALLATIONS
- WETT INSPECTIONS
- CHIMNEY SWEEPING
- CUSTOM HEARTH PADS



OFFICIAL WARRANTY AND SERVICE TECHNICIAN FOR STOVE BUILDERS INTERNATIONAL  
HONEST AND PROFESSIONAL  
FULLY INSURED • WETT CERTIFIED SWEEP AND INSPECTOR  
**CONTACT LORNE AT 705-785-3504 or [barlowsweeps@yahoo.com](mailto:barlowsweeps@yahoo.com)**

**Michael Mantha**  
MPP/député d'Algoma-Manitoulin  
**1-800-831-1899**  
**[mmantha-co@ndp.on.ca](mailto:mmantha-co@ndp.on.ca)**

**NO JOB TOO BIG OR TOO SMALL!**

**Day & Night**

**GENERAL CONTRACTING SERVICES PLUS**

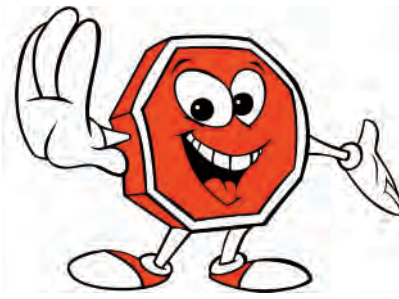
- Residential Roofing & Repairs • Additions, Garage & Deck
- Sheds & Fences • Workmanship Guaranteed • Asphalt Shingles
- Soffit & Fascia • Window & Door Installations
- *Serving All of Algoma District*

**FREE ESTIMATES • RESIDENTIAL • FULLY LICENSED & INSURED**  
**\$2 MILLION GENERAL LIABILITY LIMIT • WSIB COVERAGE**  
**Call the Insured Professionals at 705 254-9150**



**DAVID NELSON**  
*Sales Representative*

davidontheisland@gmail.com



**Northern Advantage, Brokerage**

*Independently owned and operated*

Helping you is what we do

**Cell 705-941-1947**



**141 Birkshire Place**

Executive home with custom kitchen, sunken family rm & living rm. A must see! **\$449,900**



**1552 Sailor's Encampment**

228' of sandy shoreline! Updated & well maintained, character home **\$295,000**



**1295 C Line Road**

Spacious custom built 1600 sq. ft. brick home. Features too numerous to list and all on 10 acres. **\$369,900**



**1355 Richards**

Excellent brick bungalow with spectacular view overlooking Richards Landing & the North Channel! **\$394,900**



**1581 Bridge Road, (Mom's Restaurant)**

Well established popular restaurant in high traffic location. 70+ seats. Great opportunity! **\$229,900**



**3345 Haight Road**

Gorgeous cottage with spectacular view of Twin Lakes. **\$234,900**



**Lot 35 Desbarats Lake**

768' Front 18 acres **\$79,900**



**5140 Wierzbicki**

Waterfront 3 bdrm, open concept with loads of glass. **\$229,900**



**2328 Huron Line**

Bright & spacious in a gorgeous country setting this significantly updated 3 bdrm bungalow has it all! **\$239,900**



**51 Island Gawas Bay**

Own your own island! Stunning setting in Gawas Bay with gorgeous cottage. **224,900**



**3654 Hamilton Dr.**

Quality built cottage with lake intake & composting toilet, hdwd & more **\$179,000**



**Lots 6, 7, 8 & 9 Canoe Point Rd.**

410' water frontage on Canoe Point Road **\$369,900**



**3236 Ash Street**

Gorgeous island home on 2.5 acres. custom designed & built with natural cedar siding. **\$359,900**



**3034 Ringham**

Extensively renovated 2 bdrm bungalow. Excellent pellet stove for cost efficient heating. **\$118,500**



**24 Valhalla**

Spacious 3 bedroom in prime location. Main floor family room and more. **\$264,900**



**1785 Shore Road**

Gorgeous Island waterfront completely renovated! **\$424,900**

**SOLD**



**1304 Richards Street**

Affordable bright & spacious within walking distance to all amenities! **\$129,900**



**1710 15th Side Road**

Quality throughout in this bright 3 bdrm with 2 car garage & more! **\$269,900**

**• ST. JOSEPH ISLAND WATERFRONT  
RED MAPLE DRIVE...**

**• CALL ME FOR ST. JOSEPH ISLAND  
HUNTING/WOOD LOTS AND WATERFRONT LOTS**



# The Mortgage Centre

**5 Year Fixed 2.59%**  
**5 Year VRM 2.25%**

(OAC/Subject to change)

## PRIVATE MORTGAGES AVAILABLE!!

1st & 2nd Mortgages/Refinances/Renewals

APPLY @ [www.AlgomaMortgage.com](http://www.AlgomaMortgage.com)

Recreational Waterfront & Non-Residents



Dan Alessandrini AMP  
Broker/Owner  
Agent #M09001322



**QUEEN & GORE**  
**705-256-LOAN**  
**(5626)**



Get a **FREE** Mortgage  
Check Up!

The Real Estate Stop Inc, Brokerage is independently Owned and Operated Licence #10572

# **willson-carter** LAWYERS

*C. Bruce Willson, B.A., LL.B., LL.M.*  
*Lindsay D. Marshall, B.A., J.D.*

**For all your Residential & Commercial Real Estate needs.**

Let us take care of you with courteous and professional Services.

- **Purchases** • **Sales**
- **Mortgages** • **Title Searches**
- **Title Insurance**

494 Albert Street, East  
Sault Ste. Marie, Ontario  
Tel: (705) 942-2000 • Fax: (705) 942-6511



[www.willsoncarter.com](http://www.willsoncarter.com)

# Your Island Garage Building Expert ...

## Book Now for All Your Projects

Shell includes  
Labour & Materials  
24' x 28' .....\$16,260  
26' x 26' .....\$16,360  
28' x 30' .....\$20,330  
plus taxes

Ask us for pricing on other sizes!

### GARAGE PLUS

Home Improvements

[garageplus@yahoo.ca](mailto:garageplus@yahoo.ca)

Mark Henderson 246-2110

tions should have lower per capita expenditures but still be similar to other urban areas. Isolated low population communities would have higher per capita expenditures but again be similar to other geographically similar locations. The catchment areas of the MMH and BRDHC are geographically similar. But.....

The per capita health care spending in the BRDHC catchment area is  $(\$9,388,664/5386) = \$1743.00$ . The per capita health care spending in the MMH catchment area is  $(\$1,025,600/5511) = \$186.00$ .

In the last fiscal year, the Ontario government allocated some \$50.8 Billion towards health care. This represents 38.5% of the total budget. Thus 38.5% of your provincial tax dollar, 38.5% of my provincial tax dollar and 38.5% of a Blind River resident's provincial tax dollar goes towards health care. Yet Blind River gets a per capita benefit of \$1,743.00 and we get a per capita benefit of \$186.00.

Nevertheless one of the proposals is to cut our services even further. A cut that has very real existential implications for the MMH and for doctor services in the community. Fairness?

Toni Stasie, Hilton Beach

## CELEBRATING FIFTY YEARS

*A Legacy of Caring Since 1965*

Proud supporters of your community; our family providing your family with dignified, affordable service in your time of need.



Beggs Funeral Home Limited  
Menard Funeral Home Inc.  
Driftwood Cremation Centre Inc.

175 Main Street, Thessalon  
705-842-2520

72 Lakeside Avenue, Blind River  
705-356-7151

©2006 Copyrighted Material

## CUT INTO SPRING!

GET 20% OFF SELECT 400 SERIES CHAINSAWS

LIMITED TIME OFFER!

APRIL 1 - JUNE 30 2016



### HUSQVARNA 435

Very easy to start and manoeuvre, an all-around saw for demanding users.

41 cc - 2.15 hp | 9.2 lbs (4.1 kg)

**\$311.99** MSRP

Reg. \$389.99 MSRP

### HUSQVARNA 445

For users who want a pro-grade saw, this powerful all-rounder combines performance with fuel efficiency.

46 cc - 2.8 hp | 10.8 lbs (4.9 kg)

**\$383.96** MSRP

Reg. \$479.99 MSRP



### HUSQVARNA 455 RANCHER

Robust all-round saw for demanding jobs. Easy handling and high torque over a wide rpm range.

56 cc - 3.5 hp | 12.8 lbs (5.8 kg)

**\$479.99** MSRP

Reg. \$599.99 MSRP

© 2015 Husqvarna AB. All rights reserved.

**KENTVALE** **Home hardware**

Sales & Service

712 K Line Road, Richards Landing  
705 246-2002

[www.kentvale.com](http://www.kentvale.com)

**Husqvarna**  
READY WHEN YOU ARE

## CAFC Meeting on April 21st

The Central Algoma Freshwater Coalition (CAFC) will be hosting its Annual General Meeting, along with a presentation on the Algoma Coastal Wetlands on Thursday, April 21st at the Bruce Mines Community Hall.

The evening will start with a 'Meet and Greet' at 6:30 pm. At 7 pm, Greg Cull, the Management Biologist of the Ministry of Natural Resources and Forestry's Sault Ste. Marie District Office will highlight the ecological importance of wetlands on the landscape and provide some insight into how important coastal wetlands are for ensuring biodiversity in Central Algoma.

This will be followed at 8 pm by a brief Annual General Meeting, featuring CAFC's Annual Report and the Election of Directors.

The meeting is open to the public and everyone is welcome.

The Central Algoma Freshwater Coalition (CAFC) is a not-for-profit organization dedicated to the protection, improvement and restoration of the watersheds throughout the Central Algoma Region, a region that stretches from the easterly boundary of Sault Ste. Marie to the easterly boundary of the Municipality of

Huron Shores (including St. Joseph Island).

CAFC is continually seeking funding to protect and restore our watersheds. With the help of many volunteers and local agencies, CAFC has been successful in obtaining significant government and public grants. All of this money has been invested into local restoration projects, public education, and water quality studies.

It's all in keeping with their watchwords and their mission: Keeping Central Algoma a place to live, swim, drink, fish, and play for generations to come!



## Thank you

THE 49TH ANNUAL Maple Syrup Festival hosted by the Royal Canadian Legion St. Joseph Island, would like to extend our most sincere thanks to all who helped make this event a great success. Over 100 volunteers aged 6 to 90 years old came with smiles and hearts of gold. Throughout the two weekends of our event, over 10,000 pancakes and 17,000 sausages were served to guests who were greeted with honest St. Joseph Island hospitality.

Thanks to the local organizations, maple syrup producers and crafts vendors who complimented our festival with such a special flare. Thanks to C.U.P.E who sponsored many meals on the final Sunday, to the 49th Regiment Field Artillery RCA of Sault Ste. Marie who helped whenever there was a job that needed an extra set of hands, and to the C.A.S.S. History Club who assisted us in recognizing the 99th anniversary of the Battle of Vimy Ridge, and of course to the over 3,000 people who came out to support us, please accept our most heart-felt thank you!



8709 Hwy 17 E.  
Bruce Mines, ON  
705 785-3739

**DOGS  
ONLY  
GROOMING BY  
SHELENA**

*Truly personal attention...  
Grooming one dog at a time - yours!*

**Professional dog grooming services for all breeds**

# DAY & NIGHT

## Tree and Hedge Removal Services

**OPEN LATE & WEEKENDS. CALL ANYTIME!**

- Hazardous tree removal
- Tree stump grinding & removal
- Tree cutting, shaping & hedge removal
- Tree & shrub pruning & removal
- Residential and Commercial
- Fully insured up to \$2 million

**We cut down and remove dead wood, big or small trees**

**24 hour, year round service FREE no obligation estimates**

**Serving St. Joseph Island and all of Algoma**

**Tel: 705 254-9150**

## Friday Night Foods at the Legion

The special is Ribs & Pasta by Wayne Desing along with the regular menu.

Entertainment will be the Ross Phillips Band

Entertainment supplied by volunteer musicians

Come and try your luck at the meat draw!

Take out available

## FOR SALE

Husqvarna Lawn Tractor. hardly used, very good condition, about 4 years old. \$600. Cut grass collector for attaching to the lawn tractor (still in the box) \$100. Husqvarna snow blower - hardly used, about 4 yrs old, very good condition \$600. Was not used this winter. Call Bill or Jan at 705 246-1130. View at 2749 Hawdon Drive. Prices are firm.

30 inch electric stove beige colour good for a camp. Every thing works but the clock. \$50. Call 705 246-3533.

Pinnacle model stair-lift, 6 yrs old, ideal for a high-rise bungalow, asking \$750. Call 705 246-3884

33 gallon aquarium with stand and all necessary filters. Just add fish and water! \$100. Call 705 246-0041

FREE! NordiTrak T7.0 exercise machine. Flexible set-ups, 6 foot belt and many programs. In great shape. You pick up. Call 705 246-3833

FREE! Older, almost antique solid wood dining table with leaves and 4 chairs. You pick up. Call 705 246-3833

FREE! Older fridge and stove, both in working condition. You pick up. Call 705 246-7421

## SITUATION WANTED

Resident of St. Joseph Island seeking permission to bow hunt during spring turkey season April 25 - May 25. Insured member of OFAH and SJIHA. Willing to reimburse. Please call Mark at 416 910-4500. or email lorraine.dias11@hotmail.com

## ITEMS WANTED

Anyone have a small freezer for sale? Please call 705 246-2069

## HELP WANTED

Summer Student Employment St. Joseph Island Museum. Applicants are to send a cover letter and resume to laveramc@gmail.com or mail to Lavera Crack PO Box 59, Hilton Beach, P0R 1G0 by April 25, 4 pm. Positions dependent upon funding.

The Tilt'n Hilton is now accepting resumes for summer employment. Please apply in person. 705 246-2204.

## ANNOUNCEMENTS

**Bible Verse Signs:** The Gospel Text Mission is currently taking requests to display one of their KJV Bible Verse Signs on your property. You provide the location, prayerfully choose the KJV verse and we furnish the sign. Ownership of the sign stays with the mission. Installment and maintenance are FREE and the area serviced is between Espanola and Sault Ste. Marie. Kindly send your particulars to: burgundy9@canada-11.com

From the SJI Historical Society: Once the snow disappears, we will begin taking down the last 10 Historical Society signs, and replacing them with new ones. After over 10 years they have become sun damaged. There are five in Jocelyn Twp, two in Hilton Village, One in Hilton Twp. and two in St. Joseph Twp. that will be replaced, and possibly more if we discover others need replacing now also. So if you note a sign missing in your area, not to fear, they will be returned by early summer."

It's canvass month!! Volunteers of the St. Joseph Island Cancer Society are out canvassing the Island, please be generous at your door. Help us fight back against this dreadful disease, our thanks!!

A Celebration of Life for Catherine Bering will take place this Saturday, April 16th, at Island Springs Golf Resort on St. Joseph Island from 3 - 6 pm. Family and friends are welcome to stop by to share memories and conversations.

## Back by popular demand! AlgomaTrad's Trivia Nite "Fun"Raiser!

IF YOU'RE A TRIVIA FAN, or just someone who likes to have fun, here's another great idea for Friday, April 22nd. You could join the AlgomaTrad family of friends for their 4th Annual Trivia Nite "Fun"raiser!

It will be at the Bar River Hall in Echo Bay and offers a great evening of friendly team competition, fun games and – of course, music! – with entertainment by AlgomaTrad youth featuring The Wildman Sisters, plus snacks, a cash bar with Outspoken Brewery products and draw prizes...with all proceeds going towards AlgomaTrad's music education programs.

You can come alone or with some friends for just \$15. per person OR why not organize an entire table of 10 people for \$150. Don't have that many friends? No worries, come anyway and we'll add you to a team!

The doors will open at 6:30 and "Let the Games Begin!" promptly at 7 pm.

They'll be glad to save a seat (or an entire table) for you. Just contact Gina Marie at: punchbug150@yahoo.com or call Julie and Pat at 705 257-6106 to get in on the fun.



## THANK YOU

The Hunters and Anglers general membership meeting is on Thursday April 14th at 8 pm. Our guest speaker will be Carmen Nelson speaking on the recent concerns with the depletion of pollinators worldwide and what our club and the public can do to help alleviate the problem. Public is welcome and encouraged to attend this very informative presentation.

Happy Birthday Sherry Rogers, from all your friends!

I would like to thank Kay McMaster for sharing her winning basket from the Richards Landing library. I'm enjoying my lap quilt, my mug and coffee and warm slippers. Thank you also to the donors. *Sincerely, Donna Berry*

## Tax Preparation Services

Starting at \$50. for a basic return. Small businesses welcome. Call P. Nadjiwon, CPA. No calls on Sunday please. Phone 705 246-0569.

## Sales Associate Part/FullTime

- Requirements:**
- Ability to be a team player
  - Motivated
  - Strong customer service skills
  - Knowledgeable in the following areas: building materials, plumbing, paint, electrical.
  - A background in construction would be a definite asset.

**Job Duties:** Working with the public, problem solving, operating forklift and delivery truck, heavy lifting and stocking shelves.

Please bring resume in person to **Kentvale Home Hardware, 712 K Line Road, Richards Landing.** Questions please call **705-246-2002.**

## Crimestoppers Warns of ATM Frauds

CRIME STOPPERS AND the Sault Ste. Marie Police Service would like to make the public aware of several frauds.

Between March 15th and 5th April 2016 an unknown person or persons placed skimming devices on ATM machines and handheld pin pads at several locations within the city. The skimmers were located by the business and police were notified.

Skimmers are essentially card readers that grab the data off the card's magnetic strip. They are attached to ATM terminals or handheld pin pads and harvest data when someone swipes their card.

When using your card, remember to check for tampering. Wiggle everything as ATM machines and handheld pin pads are solidly built and remember to check your transactions regularly for any unauthorized payments or purchases.

Don't hesitate to notify an employee of any suspicions of tampering.

If have information on this crime or any other crime, call Crime Stoppers at 705-942-7867 or 1-800- 222-8477. Type your tip through our website at [www.saultcrimestoppers.com](http://www.saultcrimestoppers.com) or text the keyword SSM along with your tip to 274637.

Video Link: <https://youtu.be/5dYz3M2m6f4>



**Deadline for classifieds is noon Tuesdays**

**Deadline for display ads is Mondays at 3 pm**

*Like us on Facebook!  
The Clippings is in full colour  
on Facebook*

[www.facebook.com/Islandclippings/?ref=aymt\\_homepage\\_panel](http://www.facebook.com/Islandclippings/?ref=aymt_homepage_panel)

**Please Share!**



*Please identify yourself when sending in an ad,  
or your ad will not be published.*

## VISIT MOOSE SWEATS FIRST!

- Hatley Kid's Rain Coats and Boots
- Hue Leggings
- Spring and Summer Fashions



- Hatley men's and women's sleepwear

**OPEN 7 DAYS A WEEK**  
MONDAY - SATURDAY 10 - 5 • SUNDAY 11 - 5



**246-2777**

**RICHARDS LANDING**

# Classified Ads and Announcements

The Island Clippings is pleased to publish personal Classified Advertising and Public Service Announcements of **50 words or less**, free of charge to Island residents, as a community service. Other than personal for sale ads (**please limit three items**) the announcement must be of value to the community. We reserve the right to decide if the ad is of service to the community. **Please identify yourself when sending in a classified or your ad will not be published.**

**Ads or announcements for non-residents or items or services, to be sold for profit, or generate income or events charging an entrance fee (which includes "not for profit organizations") as well as items valued at over \$1,000, will incur a nominal charge of \$10, plus HST. We reserve the right to determine if a fee is required. We reserve the right to edit down to 50 words or less.**

**Business or commercial ads, including those placed by individuals do not qualify as Classified ad or Public Service Announcements.**

**ments.** Such advertising must be via display advertising, governed by our published rates in effect at that time. Ads or announcements will appear in one issue, but may be repeated, to a maximum of three weeks (space permitting). **Advertiser must resubmit ad each week.** To ensure space for everyone, please limit your content to a **maximum of 50 words.**

Ads can be placed by: **Email to:** islandclippings@gmail.com or by phone 705 246-1635 (**from 9 – 5, Mon-Fri**) or fax 705 246-7060.

**Mail to:** Island Clippings  
RR1, Hilton Beach, ON P0R 1G0

Or simply put it in our pick-up box conveniently located at Ambeault's. Kent's Corner & the Hilton Beach Waterfront Centre. **Sorry, we're not available on Sundays.**

## WHAT'S HAPPENING ON ST. JOE

### Friday

Hens & Stitches, Dr. Trefry Centre - 10 am to 12 pm, 705 246-0036  
Island Cast-a-Weights, Calorie Watchers, moved to Hilton Beach Waterfront Centre, near Post Office, same time - 8:30 am  
Walking at the Legion - 9 am to noon  
Friday Foods at the Legion  
AA Meeting, United Church (new addition, side door) - 8 pm

### Saturday

The Children's Library - 10 am to 3 pm, Storytime at 10:30 am  
Hilton Union Public Library - 1 pm to 5 pm  
Free pool all day in the Legion lounge  
St. Joseph Twp. Public Library - 10 am to 3 pm  
St. Boniface Roman Catholic, Hilton Beach at 4:30 pm.  
Teen Game Night - Legion lounge - 6 pm to 9 pm

### Sunday

The Anglican Parish of St. Joseph & St. George worships at 11 am at Holy Trinity, Jocelyn  
Free Methodist, 10th Side Rd. Coffee, tea and friendship at 10:30 am. Worship service 11 am.  
Island Bible Chapel, Richards Landing.  
Lord's Supper 10 am, Family Bible Hour 11:15 am.  
Grace United, Hilton Beach. 9:30 am.  
Harmony St. Marks United, Richards Landing. 11 am.  
The Church of Jesus Christ of Latter-Day Saints, at MacLennan Hall, Primary, Priesthood, Relief Society. 10 - 10:40 Sunday School 10:50 - 11:30 Sacrament Meeting 11:40 - 12:30

### Monday

Walking at the Legion - 9 am to noon  
Euchre, Legion Hall - 7:30 pm (\$4.00 per person)  
Bridge, Dr. Trefry Centre - 1 pm to 4 pm (Open to all seniors) 705 246-0036  
Exercise Class, Dr. Trefry Centre - 10 am  
Free pool all day in the Legion lounge

Carpet Bowling for 50 Plus, Legion - Refreshments Available - 1 pm  
St. Joseph Twp. Public Library - 5 pm to 8 pm  
Hilton Union Library - 3 pm to 5 pm & 7 pm to 9 pm

### Tuesday

Cribbage (singles), Legion Hall - 7:30 pm (\$4.00 per person)  
Free pool all day in the Legion lounge  
Quilting - 1-3 pm, Main Floor Waterfront Centre, Hilton Beach except the 3rd week held at the Trefry Centre. 705 246-0036  
Childcare Algoma C.A.P. Children's Playgroup - 10 am to noon at Free Methodist Church  
Yoga, Old Town Hall, RL - 7 to 8:30 pm, drop-ins welcome

### Wednesday

Walking at the Legion - 9 am to noon  
Nordic Pole Walking at the Legion - 10 am  
Life Labs at the Dr. Trefry Centre - 9:30 to 10:30 am  
Free pool in the Legion lounge  
Bridge, Dr. Trefry Centre - 1 pm to 5 pm (Open to all seniors) 705 246-0036  
St. Joseph Twp. Public Library - 10 am to 3 pm  
Food Bank, United Church, Richards Landing (side door) - 1 pm to 3 pm  
Children's Library 9 am - 12 Noon, Storytime at 10:30 am  
Hilton Union Public Library - 1 pm to 5 pm - Phone number: 705 255-3520.  
League pool in the Legion Lounge at 7:30  
Wednesday Food at the Legion 7:30 to 9 pm

### Thursday

Dr. Trefry Centre's Day Out Program - 9 am to 3 pm.  
Coffee Connections 9 am, Dr. Trefry Centre, Come for a coffee!  
Children's Library 9 am - 12 noon, Storytime at 10:30 am, After school Program 3:30 pm to 5 pm,  
Free pool all day in the Legion lounge  
Exercise Class, Dr. Trefry Centre - 1 pm  
The Children's Library, 10 am - 3 pm, Storytime 10:30 am  
St. Joseph Twp. Public Library - 3 pm to 8 pm

### WOODY'S AUTOMOTIVE

*For all your automobile,  
snowmobile & ATV repairs*  
**705 246-8800**  
**Hilton Beach**

### Debbie's Hair Hut

*A full service family salon offering  
only the finest hair products.*  
Debbie Shaughnessy - Owner  
**705 246-0457**

### Andrea S. Young, RMT

REGISTERED MASSAGE  
THERAPIST

88 Barr Road S.  
Desbarats



**705 542-2840**

### richwood hair design

**DONNA BOND**  
OWNER/HAIRSTYLIST

**705 971-4220**

Unit 1, Waterfront Centre  
Hilton Beach